

Economic Recovery + Resilience Strategic Plan

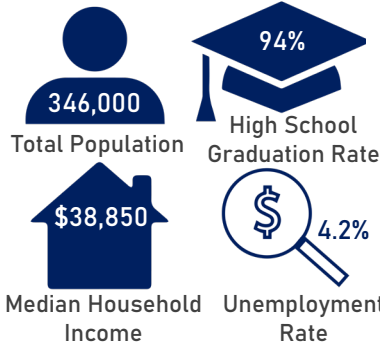
SOUTHWEST GEORGIA REGIONAL COMMISSION

BACKGROUND

Southwest Georgia is a 14-county region with a rich history, a strong sense of community, and a diverse agricultural base. The region has faced various challenges, including being hit by Hurricanes Irma and Michael, and the COVID-19 pandemic. Damages from Hurricane Michael were catastrophic with over \$84 million in infrastructure and housing damages reported to FEMA. Hurricane Michael also had devastating impacts on the region's agriculture industry, a cornerstone of the state's economy. Using CARES Act funding from the Economic Development Administration (EDA), Georgia Tech's Center for Economic Development Research produced an Economic Recovery + Resilience Strategic Plan to catalyze economic recovery and growth for the Southwest Georgia region.

SOUTHWEST GEORGIA

Southwest Georgia is a rural, diverse, and aging region.



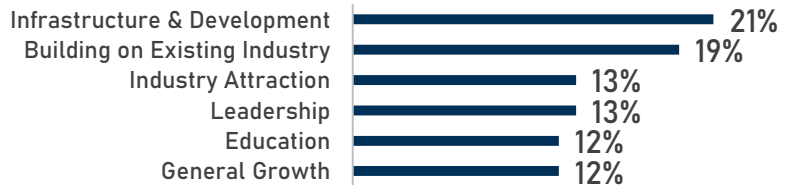
ECONOMIC RESILIENCY PLANNING

Southwest Georgia Economic Recovery + Resilience Strategic Plan components:

1. Community Profile
2. Stakeholder Interviews
3. Target Industry Sector Analysis
4. Historic Impact of Manufacturing
5. Economic Resilience Strategy
6. Downtown Development Tools
7. Natural Disaster Risk and Best Practices

OPPORTUNITIES

60 internal stakeholders ranked the most important opportunities for SWGA in the future.



FIVE-YEAR STRATEGIC PLAN

Georgia Tech developed a five-year strategic plan consisting of 75 policy action items organized under six goal areas.



TOP FIVE EMPLOYERS BY INDUSTRY SECTOR

INDUSTRY SECTOR	2020 JOBS
GOVERNMENT	32,460
HEALTH CARE AND SOCIAL ASSISTANCE	16,804
RETAIL TRADE	15,969
MANUFACTURING	15,250

TARGET INDUSTRIES



For any questions or inquiries please contact:

Beka Shiver
Southwest Georgia
Regional Commission
229.522.3552x111
www.swgrcplanning.org

Leigh Hopkins
Georgia Tech Center for
Economic Development
Research
404.894.0933
www.cedr.gatech.edu